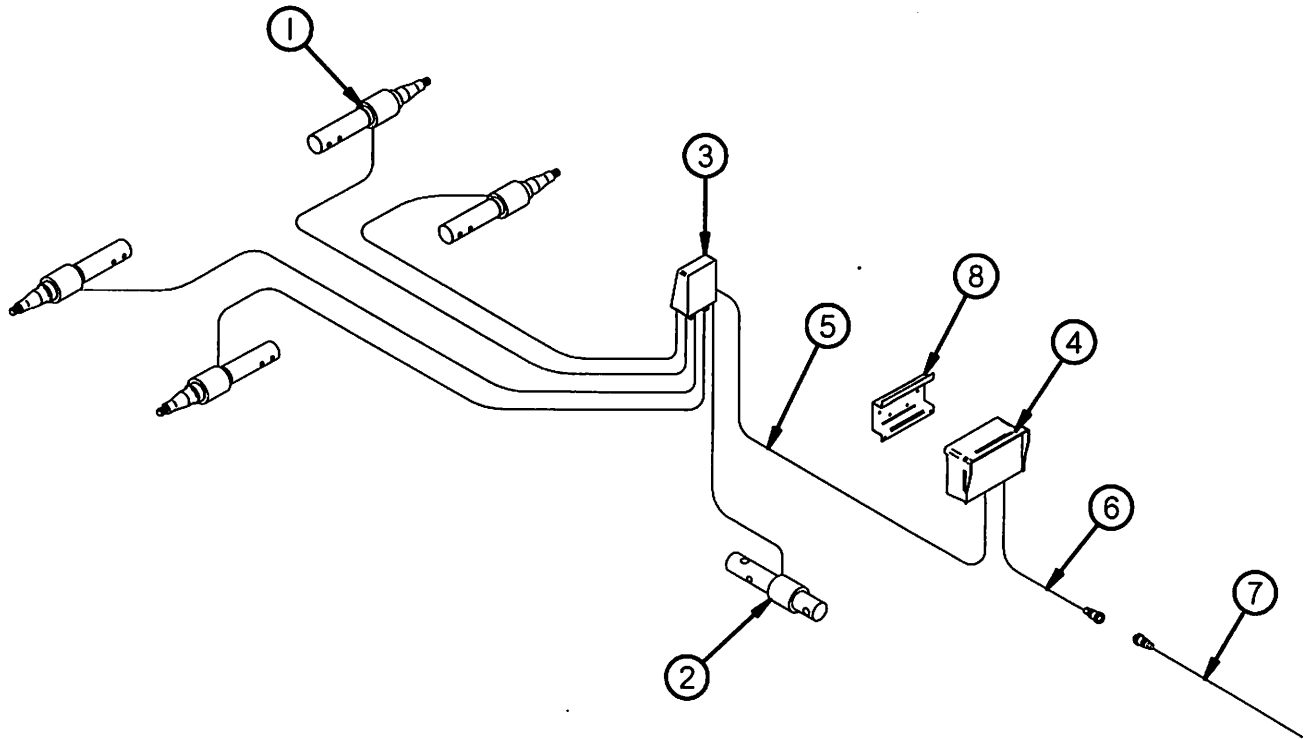


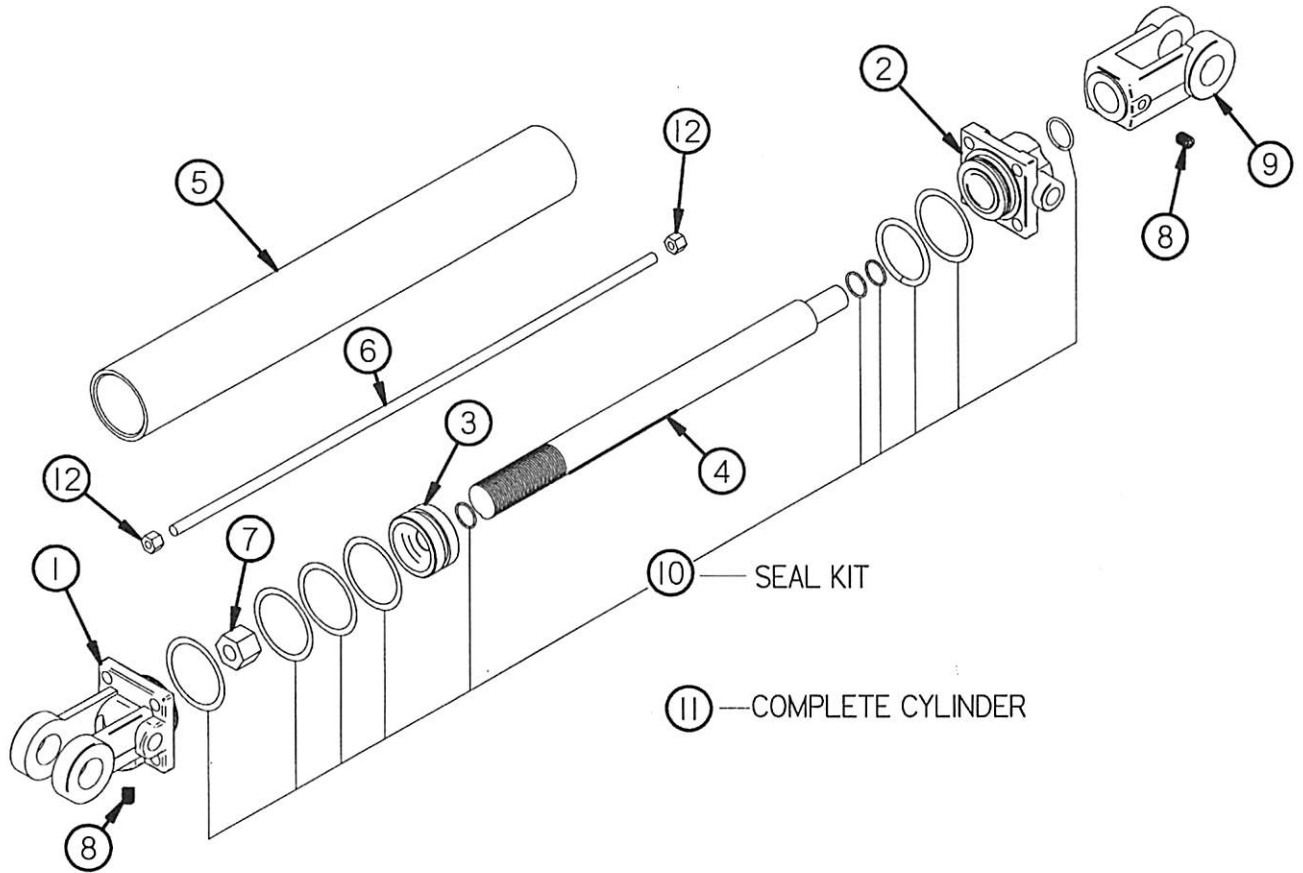
Figure 18 Scale



<u>ITEM#</u>	<u>QUANTITY</u>	<u>PART#</u>	<u>DESCRIPTION</u>
1	4	TS334	SPINDLE LOAD CELL
*	4	TS335	SPINDLE LOAD CELL (FOR OPTIONAL TANDEM)
2	1	TS336	HITCH LOAD CELL
3	1	TS83	JUNCTION BOX
4	1	TS339	SCALE DISPLAY
*	1	TS337	SCALE DISPLAY W/GPS (OPTIONAL)
5	1	TS338	JUNCTION BOX CORD
6	1	TS385	POWER CORD
7	1	16SV269	TRACTOR POWER CORD
8	1	GM408	SCALE HANGER BRACKET

NOTE: * MEANS NOT SHOWN

Figure 16 Expeller Door Hydraulic Cylinder

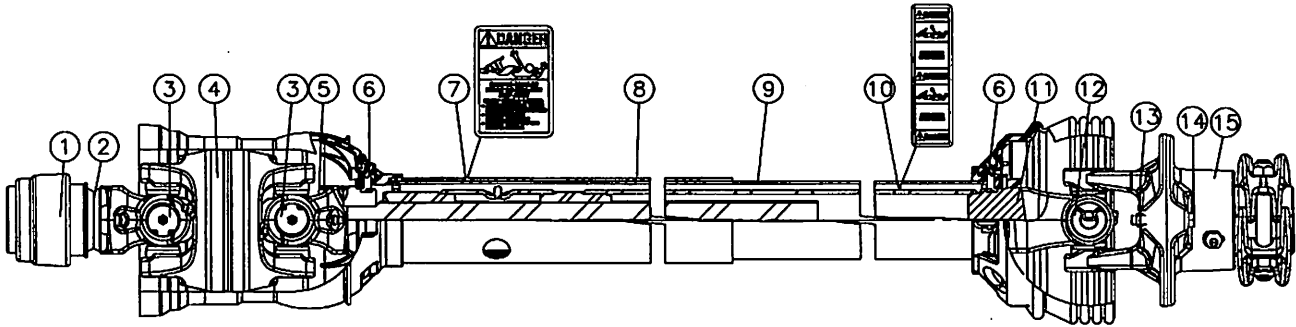


<u>ITEM #</u>	<u>QUANTITY</u>	<u>PART #</u>	<u>DESCRIPTION</u>
1	1	23N142	CLEVIS CAP
2	1	23N143	ROD CAP
3	1	23N144	PISTON
4	1	23N145A	ROD
5	1	23N146	CYLINDER TUBE
6	4	23N147	TIE ROD
7	1	23N148	PISTON NUT
8	2	23N149	PLUG
9	1	23N150	ROD CLEVIS
10	1	23N151	SEAL KIT
11	1	23N111A	COMPLETE HYDRAULIC CYLINDER
12	8	YNHX12005	HEX NUT, 3/8"-16

Figure 17
PTO

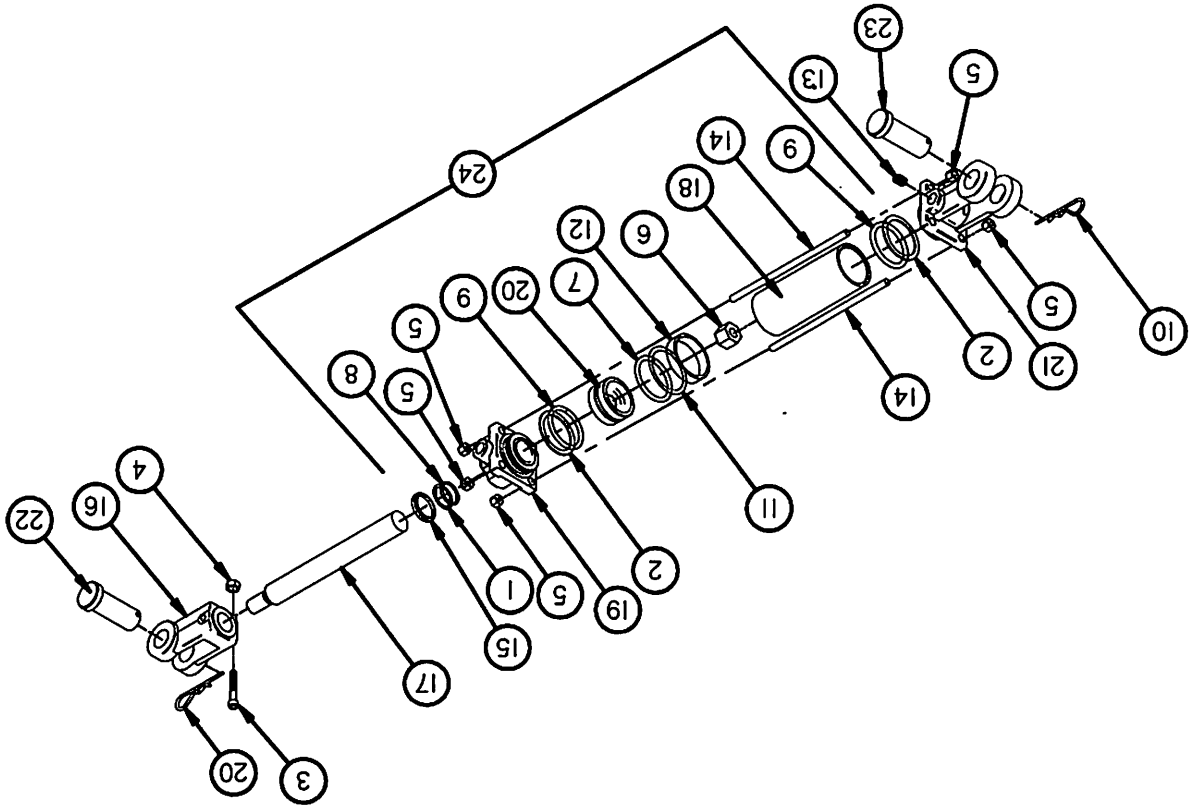
①⑥ ①⑦

①⑧ ①⑨



ITEM#	PART #		DESCRIPTION
	1000RPM (1-3/8)	1000 RPM (1-3/4)	
1	16SV274	16SV275	SAFETY SLIDE LOCK REPAIR KIT
2	TS190	TS193	SAFETY SLIDE LOCK YOKE ASSEMBLY
3	TS179	"	CROSS KIT
4	TS180	"	CENTER HOUSING
5	TS287	"	YOKE & SHAFT
6	16SV383	"	GUARD REPAIR KIT
7	16SV283	"	SAFETY SIGN 13-10021
8	TS288	"	OUTER GUARD
9	TS289	"	INNER GUARD
10	16SV388	"	SAFETY SIGN 13-10022
11	TS290	"	YOKE, TUBE & SLIP SLEEVE
12	16SV179	"	35R CROSS & BEARING KIT
13	YNTL10005	"	HEX NUT, TOP LOCK, 5/16"-18
14	YBHH10075	"	BOLT, 5/16" X 2" GR. 8
15	TS291	"	OR BALL SHEAR ASSEMBLY
16	TS292	TS296	JOINT & SHAFT HALF ASSM. W/GUARD
17	TS293	TS297	JOINT & SHAFT HALF ASSM.
18	TS294	"	JOINT & TUBE HALF ASSM. W/GUARD
19	TS295	"	JOINT & TUBE HALF ASSM.
20	TS303	—	COMPLETE PTO (#245-25123)
21	—	TS304	COMPLETE PTO (#245-25124)

**Figure 15
Auger Front & Rear Hydraulic Cylinder**



ITEM #	QUANTITY	PART #	DESCRIPTION
1	1	TS140	BACK-UP (ROD)
2	2	TS141	BACK-UP (HEAD & BASE)
3	1	TS142	CAPSCREW
4	1	TS143	CLEVIS NUT
5	8	TS144	TIE ROD NUT
6	1	TS145	PISTON NUT
7	1	TS146	O-RING (PRELOAD)
8	1	TS147	O-RING (ROD)
9	2	TS148	O-RING (HEAD & BASE)
10	2	TS149	PIN CLIP
11	1	TS150	TEFLON RING
12	1	TS151	WEAR RING
13	1	TS152	PLUG ASSY (3/4-16 SAE)
14	4	TS153	TIE ROD
15	1	TS154	WIPER
16	1	TS155	CLEVIS ASSEMBLY
17	1	TS156	ROD
18	1	TS157	TUBE
19	1	TS158	HEAD (3/4-16 SAE PORT)
20	1	TS159	PISTON NUT
21	1	TS160	BASE (3/4-16 SAE PORT)
22	1	TS161	CLEVIS PIN (ROD) 1" DIA.
23	1	TS162	CLEVIS PIN (BASE) 1" DIA.
24	1	TS163	SEAL KIT

NOTE: " MEANS SAME AS PREVIOUS MODEL

Figure 14 Gearbox

DESCRIPTION	PART#	QUANTITY	ITEM#
GEARBOX	TS240	1	1
GEARBOX COVER	TS279	1	2
SECONDARY SHAFT	TS280	1	3
SPUR GEAR 40 TOOTH	TS281	1	4
SPLINED INPUT SHAFT	TS282	1	5
SPUR GEAR 20 TOOTH	TS283	1	6
BUSHING	TS284	4	7
BEARING	TS285	4	8
SHIM, 1/32" THICK	TS286	A/R	9
SHIM, 3/16" THICK	S36	A/R	10
SHIM, 1/8" THICK	S409	A/R	*
VENT PLUG	SD134	1	11
3/8" X 1-3/4" SQUARE KEY	Z3N303	2	12
3/8" X 2" SQUARE KEY, ROUND ENDS (HARDENED)	56N174	2	13
SET SCREW, SOCKET, KNURLED CUP PT, 3/8"-16 X 1/2"	YSKRP12010	4	14
BOLT, 5/16" X 2" GR. 8	YBHH10075	4	15
BOLT, 3/8" X 1" GR. 5	YBHH12010	4	16
BOLT, 1/2" X 2" GR. 5	YBHH16065	15	17
BOLT, 1/2" X 2-1/4" GR. 5	YBHH16095	1	18
WASHER, FLAT, 3/8" USS	YWFL12005	4	19
WASHER, LOCK, 3/8"	YWLO12005	4	20
WASHER, LOCK, 1/2"	YWLO16005	16	21
HEX NUT, 3/8"-16	YNHX12005	4	22
HEX NUT, 1/2"	YNHX16005	16	23
HEX NUT, JAM, 1/2"-13	YNJM16005	1	24
HEX NUT, TOP LOCK, 5/16"-18	YNTL10005	4	25
GEARBOX COMPLETE	TS216	1	*

NOTE: * MEANS NOT SHOWN
A/R: MEANS AS REQUIRED

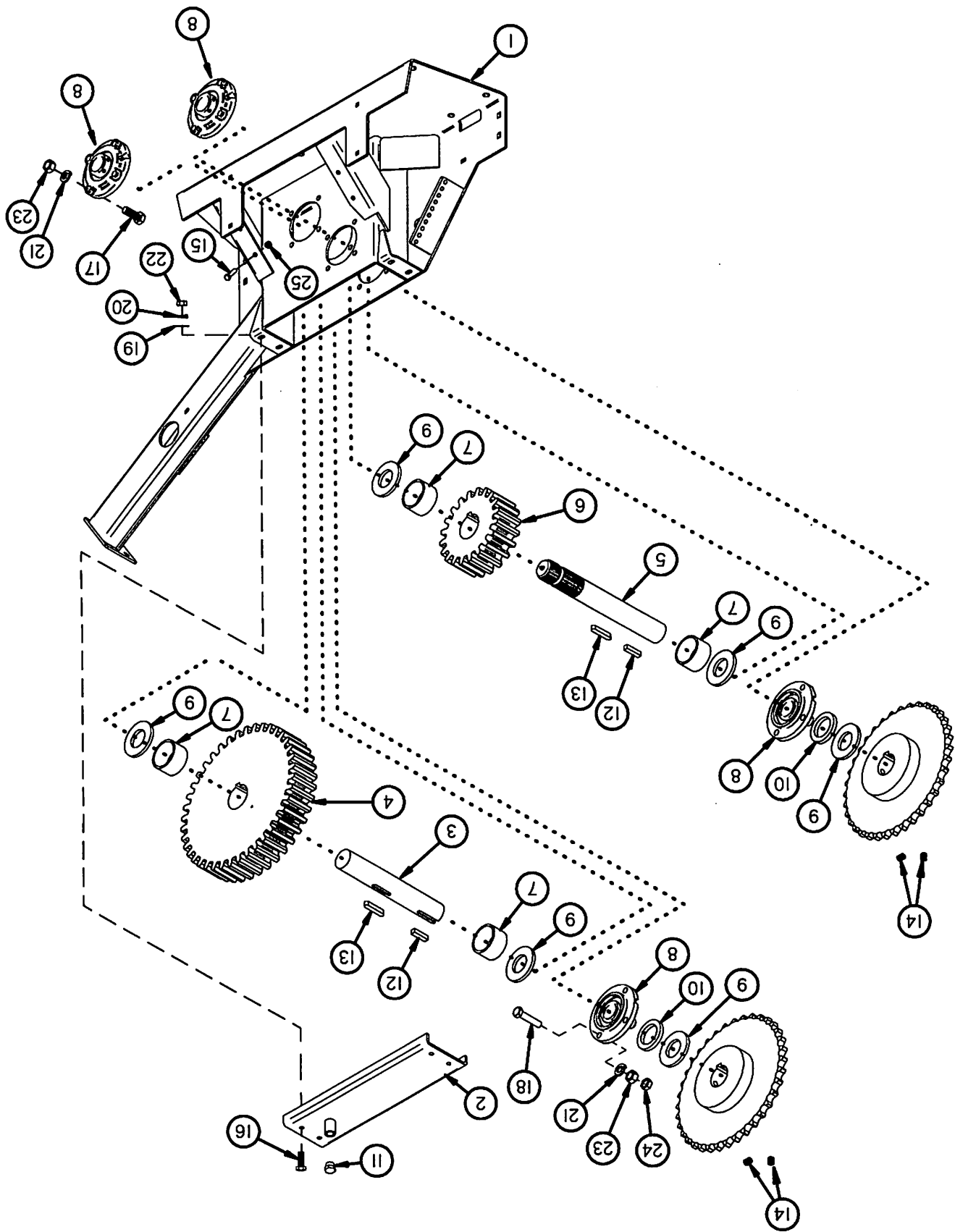
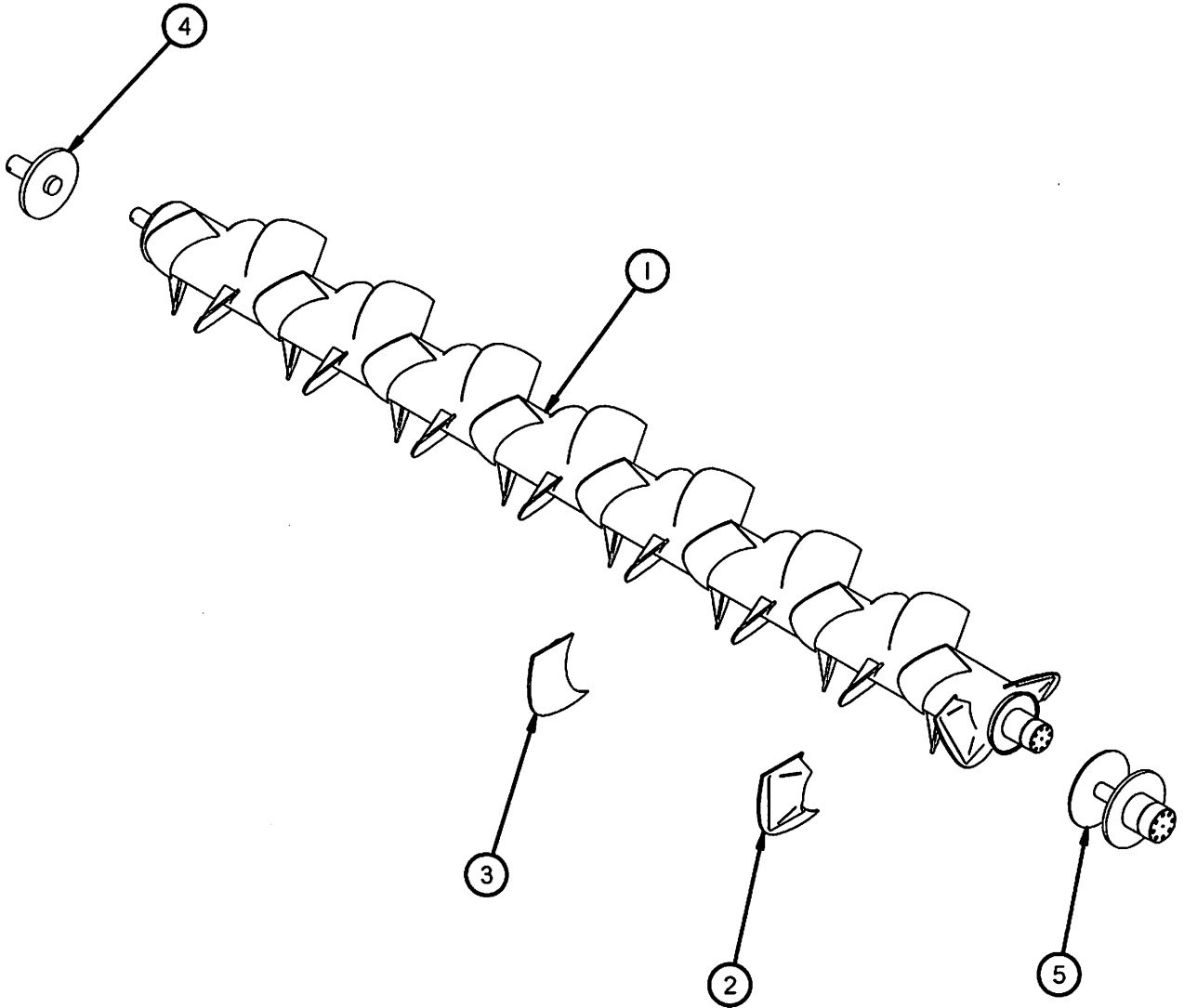


Figure 14
Gearbox

Figure 13
Auger



ITEM #	QUANTITY	PART #	DESCRIPTION
1	1	TS200	AUGER
2	2	TS275	AUGER PADDLE FRONT
3	37	TS276	AUGER PADDLE REAR
4	1	TS277	AUGER REAR ASSEMBLY
5	1	TS278	AUGER INPUT SHAFT

NOTE: * MEANS NOT SHOWN

ITEM#	QUANTITY	PART#	DESCRIPTION
1	2	S309	YELLOW HAZARD LIGHT
2	2	S310	RED TAIL LIGHT
3	4	S308	RUBBER LIGHT MOUNT
4	1	56N155	TAIL LIGHT LOOM
5	1	S441	FLASHER MODULE
6	1	TS317	HARNESS MODULE TO TRACTOR
7	4	HGV162	1/2" RUBBER WIRE HOLDER
8	1	TS129	SPIRAL WRAP, 30"
9	3	YBHH08100	BOLT, 1/4" X 3/4" GR. 5
10	4	YBHH10105	BOLT, 5/16" X 3/4" GR. 5
11	4	YWFL10005	WASHER, FLAT, 5/16" USS
12	3	YWLO08005	WASHER, LOCK, 1/4"
13	4	YWLO10005	WASHER, LOCK, 5/16"
14	3	YNHX08005	HEX NUT, 1/4"-20
15	4	YNHX10005	HEX NUT, 5/16"
*	1	S317	TRACTOR CORD

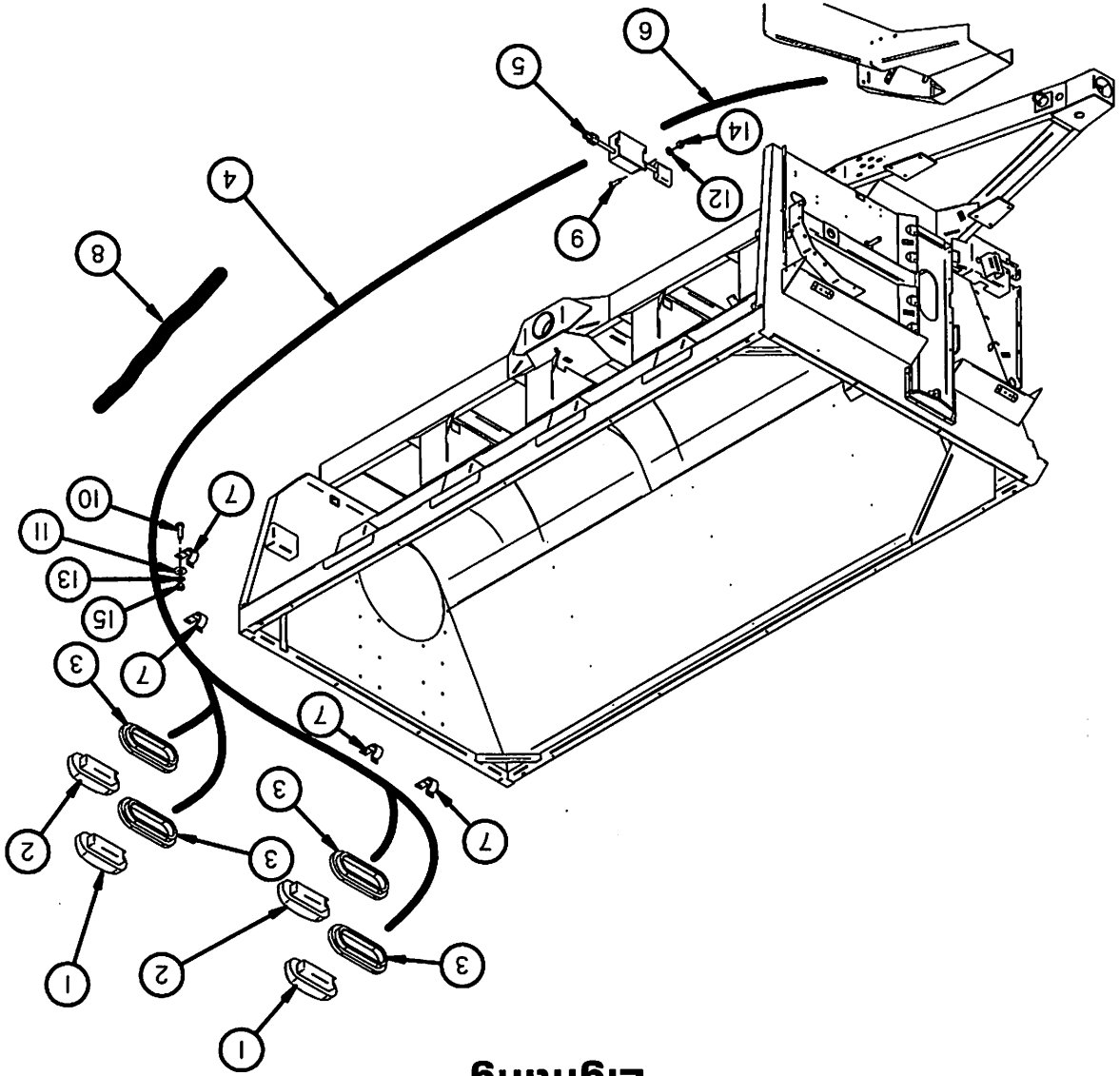


Figure 12
Lighting

Figure 11 Front Grease Lines

<u>ITEM #</u>	<u>QUANTITY</u>	<u>PART #</u>	<u>DESCRIPTION</u>
1	5	TS323	1/4"-28 TO 1/8" PIPE ADAPTER
2	4	GM30	1/8" 90° GREASE LINE ADAPTER
3	4	45N57	1/8" NPT X 2-5/8" LONG GREASE ZERK
4	1	TS265	GREASE LINE - 81
5	1	TS266	GREASE LINE - 82
6	1	TS267	GREASE LINE - 97
7	1	TS268	GREASE LINE - 101
8	2	TS270	GREASE LINE - 8.5
9	1	TS271	GREASE LINE - 13.5
10	1	TS272	GREASE LINE - 14.5
11	1	TS273	GREASE LINE - 46
12	1	TS246	SPLIT LOOM 3/4" X 18"
13	1	TS332	SPLIT LOOM 3/4" X 14"
*	2	HGV72	3/4" RUBBER WIRE HOLDER
14	9	YNML99005	M10-1.0 JAM NUT A2 SS

NOTE: * MEANS NOT SHOWN

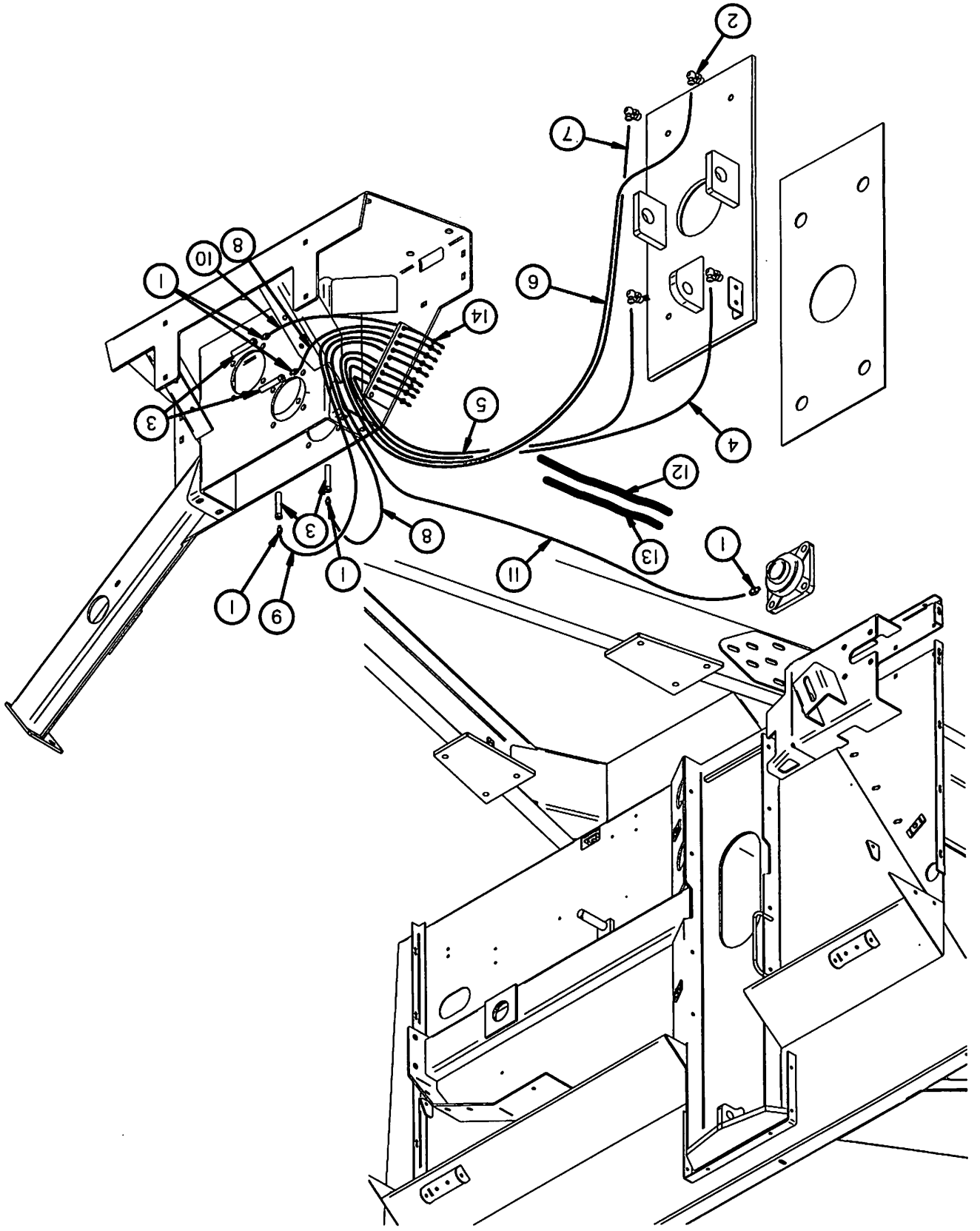


Figure 11
Front Grease Lines

Figure 10 Oiler Kit

<u>ITEM #</u>	<u>QUANTITY</u>	<u>PART #</u>	<u>DESCRIPTION</u>
1	1	HGV63	RESERVOIR
2	1	HGV71	OIL TUBE
3	1	HGV66	FILLER HOSE
4	1	HGV82	PUMP (COMPLETE)
5	4	HGV86	STANDOFF
6	4	HGV87	FERRULE
7	4	HGV85	SLEEVE NUT
8	1	HGV68	PUMP MOUNT BRACKET
9	1	HGV77	EDGING
10	1	TS322	EXTRA LONG BRUSH BRACKET
11	2	TS98	OILER BRUSH BRACKET SINGLE
12	1	HGV70	BRACKET MOUNT
13	1	HGV74	2" HOSE CLAMP
14	2	HGV75	1" HOSE CLAMP
15	1	HGV65	O-RING/JIC ELBOW
16	4	HGV67	BRUSH
17	1	TS321	OILER HANGER 1
18	2	HGV162	1/2" RUBBER WIRE HOLDER
*	2	TS269	1/4" RUBBER WIRE HOLDER
*	2	YSHW08005	ROLLING SCREW, 1/4"-20 X 3/8", HEX WASHER HEAD Z THREAD, UNSLOTTED
19	1	TS198	ORIFACE .015 (4XHX7-S)
20	1	S522	MANUAL HOLDER
21	10	YBHH08100	BOLT, 1/4" X 3/4" GR. 5
22	1	YBHH08010	BOLT, 1/4" X 1" GR. 5
23	2	YBHH12135	BOLT, 3/8" X 3/4" GR. 5
24	10	YWFL08005	WASHER, FLAT, 1/4" USS
25	11	YWLO08005	WASHER, LOCK, 1/4"
26	2	YWLO12005	WASHER, LOCK, 3/8"
27	11	YNHX08005	HEX NUT, 1/4"-20
28	2	YNHX12005	HEX NUT, 3/8"-16
28	4	YNHX16005	HEX NUT, 1/2"

NOTE: * MEANS NOT SHOWN

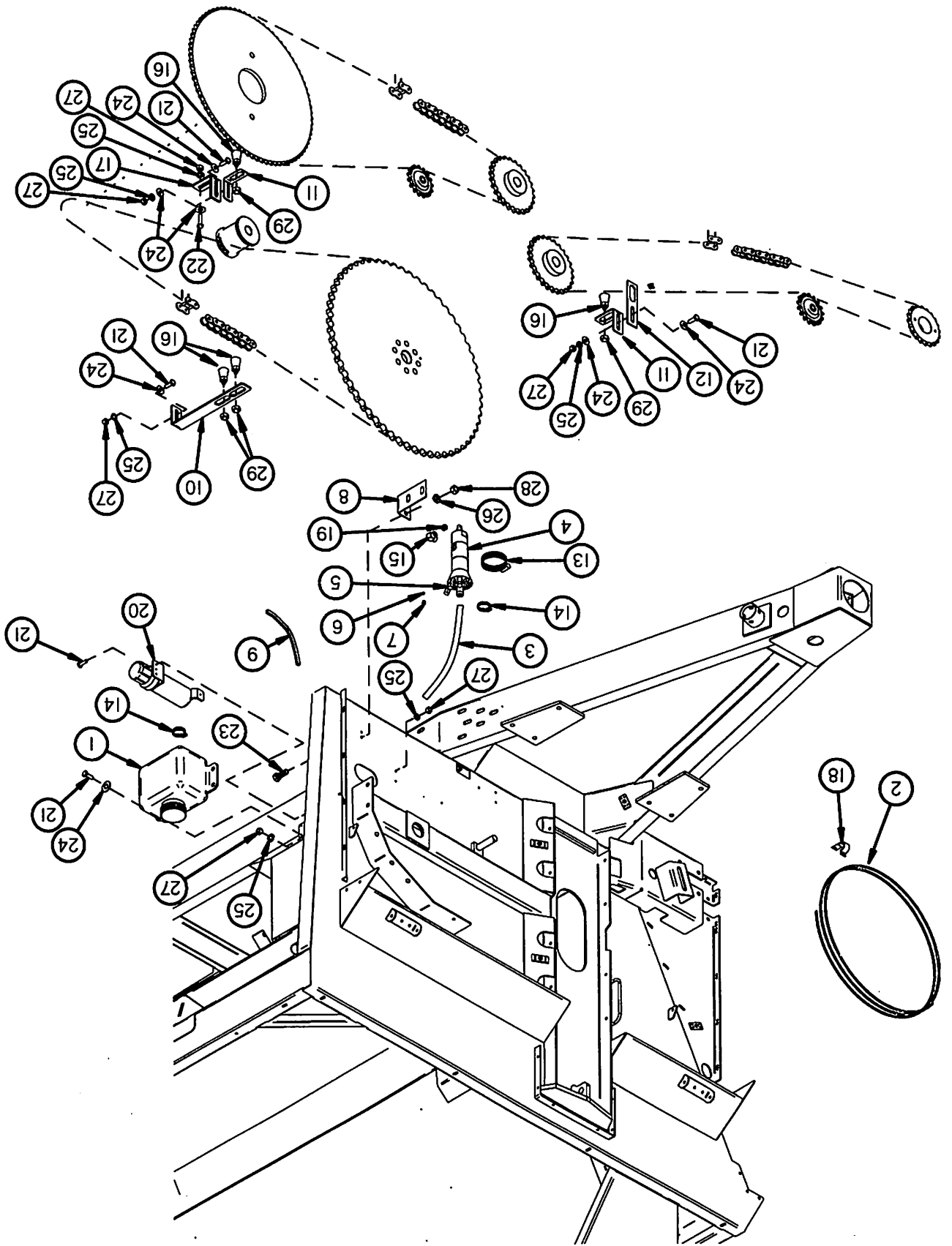


Figure 10
Oiler Kit

Figure 9 Tandem Axles

<u>ITEM #</u>	<u>QUANTITY</u>	<u>PART #</u>	<u>DESCRIPTION</u>
1	1	TS254	TANDEMAXLE LEFT 12000 LB
*	1	TS255	TANDEMAXLE LEFT 15000 LB (OPTIONAL)
2	4	TS256	PHENOLIC BUSHING
3	4	TS257	COLLAR FOR AXLE
4	4	YBHH16095	BOLT, 1/2" X 2-1/4" GR. 5
5	4	YNL16005	HEX NUT, TOP LOCK, 1/2"-13
6	1	TS258	TANDEMAXLE RIGHT 12000 LB
*	1	TS259	TANDEMAXLE RIGHT 15000 LB (OPTIONAL)
7	4	31N4	ROLL PIN
8	4	TS260	SPINDLE PIN (USED WITH OPTIONAL TANDEMS ONLY)
9	4	YPCT06020	COTTER PIN, 3/16" X 2" (USED WITH OPTIONAL TANDEMS)
10	4	TS46	TANDEM SPINDLE
*	4	TS394	TANDEM SPINDLE (15000 LB HUB)
11	4	60N5	SEAL
*	4	TS387	SEAL
12	4	60N7	INNER BEARING
*	4	TS388	INNER BEARING
13	4	60N6	INNER RACE
*	4	TS389	INNER RACE
14	4	60N8	HUB 10 BOLT 12000# (INC. INNER/OUTER RACES & STUD BOLTS)
*	4	TS395	HUB 10 BOLT 15000# (INC. INNER/OUTER RACES & STUD BOLTS)
*	4	TS261	HUB 10 BOLT 15000 LBS W/ SPINDLE
15	40	YBSD24010	STUD BOLT, 3/4"-16 UNF X 2-3/4" (3/4" SHOULDER)
16	40	YNWL24005	WHEEL NUT, 3/4"-16 UNF GR. 8
17	4	60N10	OUTER RACE
*	4	TS390	OUTER RACE
18	4	60N9	OUTER BEARING
*	4	TS391	OUTER BEARING
19	4	60N2	WASHER
*	4	TS392	WASHER
20	4	YNCA36005	HEX NUT, CASTLE, 1-1/4"-12
*	4	YNL44005	HEX NUT, SLOTTED, 2"-12
21	4	YPCT07005	COTTER PIN, 7/32" X 2"
*	4	YPCT10020	COTTER PIN, 5/16" X 4"
22	4	60N11	HUB CAP
*	4	TS393	HUB CAP
23	16	YBHH10020	BOLT, 5/16" X 1/2" GR. 5
24	4	60N15	WHEEL 13.5 X 22.5 (10 BOLT)
*	4	60N16	WHEEL 18 X 16.1
*	4	TS262	WHEEL 24 X 22.5
25	4	66N16	TIRE 445 X 22.5
*	4	50N7	TIRE 21.5L X 16.1
*	4	TS264	TIRE 700/50 X 22.5 FLOATATION
*	4	TS263	TIRE 49 X 19 X 20 AIRCRAFT W/RIM (ASSEMBLY)
*	4	TS340	AIRCRAFT TIRE, 49X19X20, 32 PLY
*	4	TS341	WHEEL 13.5 X 20, 10 HOLE
*	4	TS342	TUBE, 1600/1800-20
*	4	TS343	FLAP, 20X14

NOTE: * MEANS NOT SHOWN

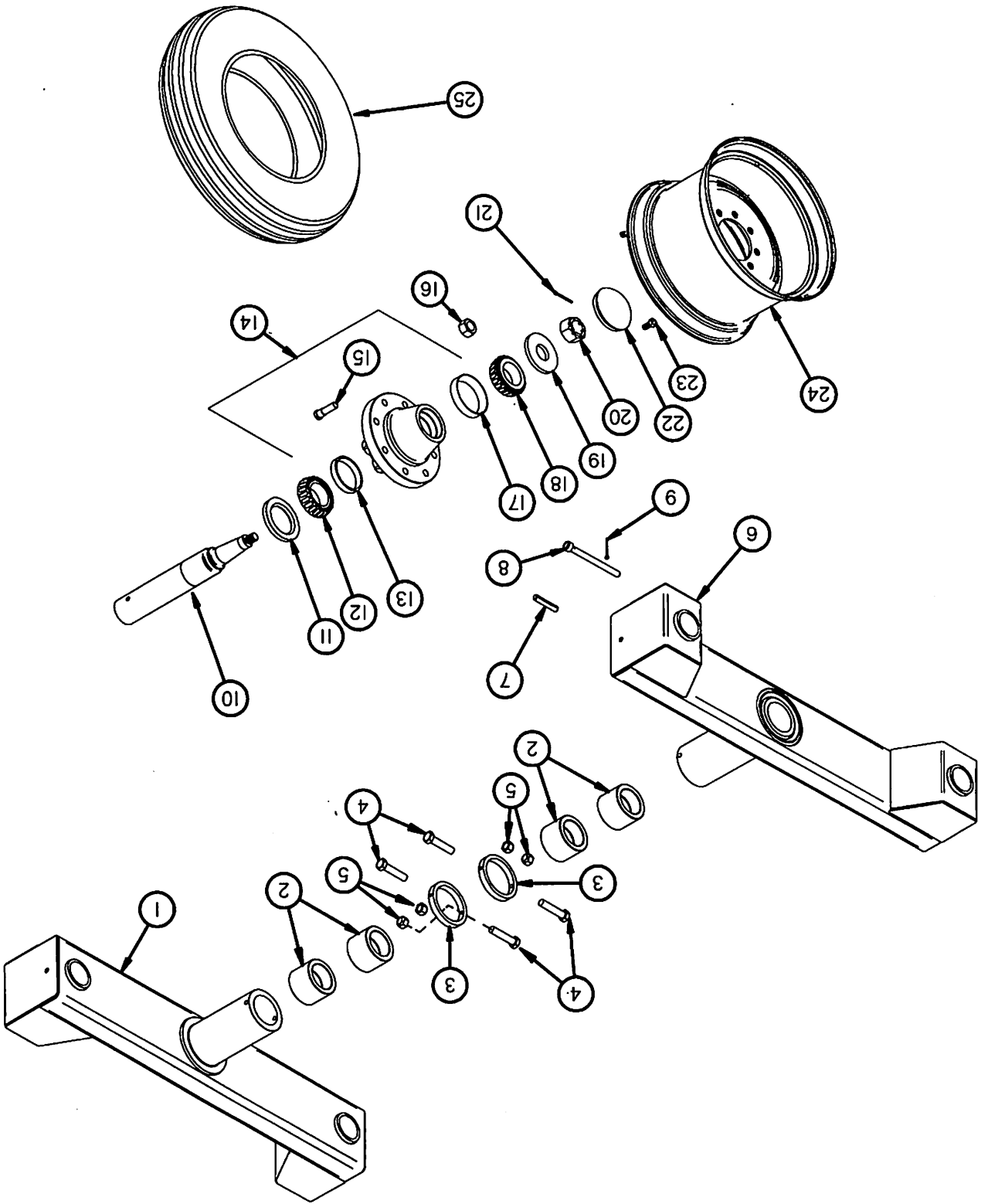


Figure 9
Tandem Axles

Figure 8
Hydraulics

ITEM#	QUANTITY	PART#	DESCRIPTION
1	1	23N111A	2 X 16 CYLINDER
2	1	TS105	3-1/4 X 8 CYLINDER
3	1	TS104	3 X 8 CYLINDER
4	2	LW55	CYLINDER PIN
5	4	T143	CYLINDER PIN
6	1	ES7	HAIR PIN
7	1	TS115	HYD. HOSE 1/2" X 49" -8 JIC FEMALE SWIVEL & -8 JIC MALE
8	1	TS247	HYD. HOSE 1/2" X 60" -8 JIC FEMALE SWIVEL & -8 JIC MALE
9	1	TS248	HYD. HOSE 1/2" X 62" -8 JIC FEMALE SWIVEL & -8 JIC MALE
10	1	TS249	HYD. HOSE 1/2" X 81" -8 JIC FEMALE SWIVEL & -8 JIC FEMALE SWIVEL
11	1	TS250	HYD. HOSE 1/2 X 110" -8 JIC FEMALE SWIVEL & 1/2 MP
12	1	TS251	HYD. HOSE 1/2 X 124" -8 JIC MALE & 1/2 MP
13	1	TS252	HYD. HOSE 1/2 X 176" -8 JIC FEMALE SWIVEL & 1/2 MP
14	1	TS253	HYD. HOSE 1/2 X 200" -8 JIC FEMALE SWIVEL & 1/2 MP
15	2	TS116	HYDRAULIC LINE
16	3	TS135	-8 MALE O-RING TO -8 MALE JIC 90°
17	2	TS136	3/8" MALE PIPE TO -8 MALE JIC 90°
18	1	TS137	-8 MALE O-RING TO -8 MALE JIC
19	4	TS138	-8 FEMALE JIC SWIVEL TO -8 MALE JIC 90°
20	1	TS139	-8 JIC SWIVEL BRANCH TEE
21	1	TS299	-8 MALE JIC TO 3/8" FEMALE PIPE
22	4	DWM205	QUICK COUPLER MALE
23	3	TS117	LINE CLAMP CAP
24	6	TS118	LINE CLAMP BLOCK
25	3	T2008S	DOUBLE STEEL LINE CLAMP
26	11	GM69	LINE CLAMP CAP
27	22	GM70	LINE CLAMP BLOCK
28	11	GM9	HOSE CLAMP 1/2" TWIN (COMPLETE)
29	1	TS197	ORIFACE .031
30	4	YPCT05010	COTTER PIN, 5/32" X 1-1/2"
31	7	YPCT06005	COTTER PIN, 3/16" X 1-1/2"
32	3	YBHH10030	BOLT, 5/16" X 1-1/2" GR. 5
33	11	YBHH10055	BOLT, 5/16" X 1-3/4" GR. 5

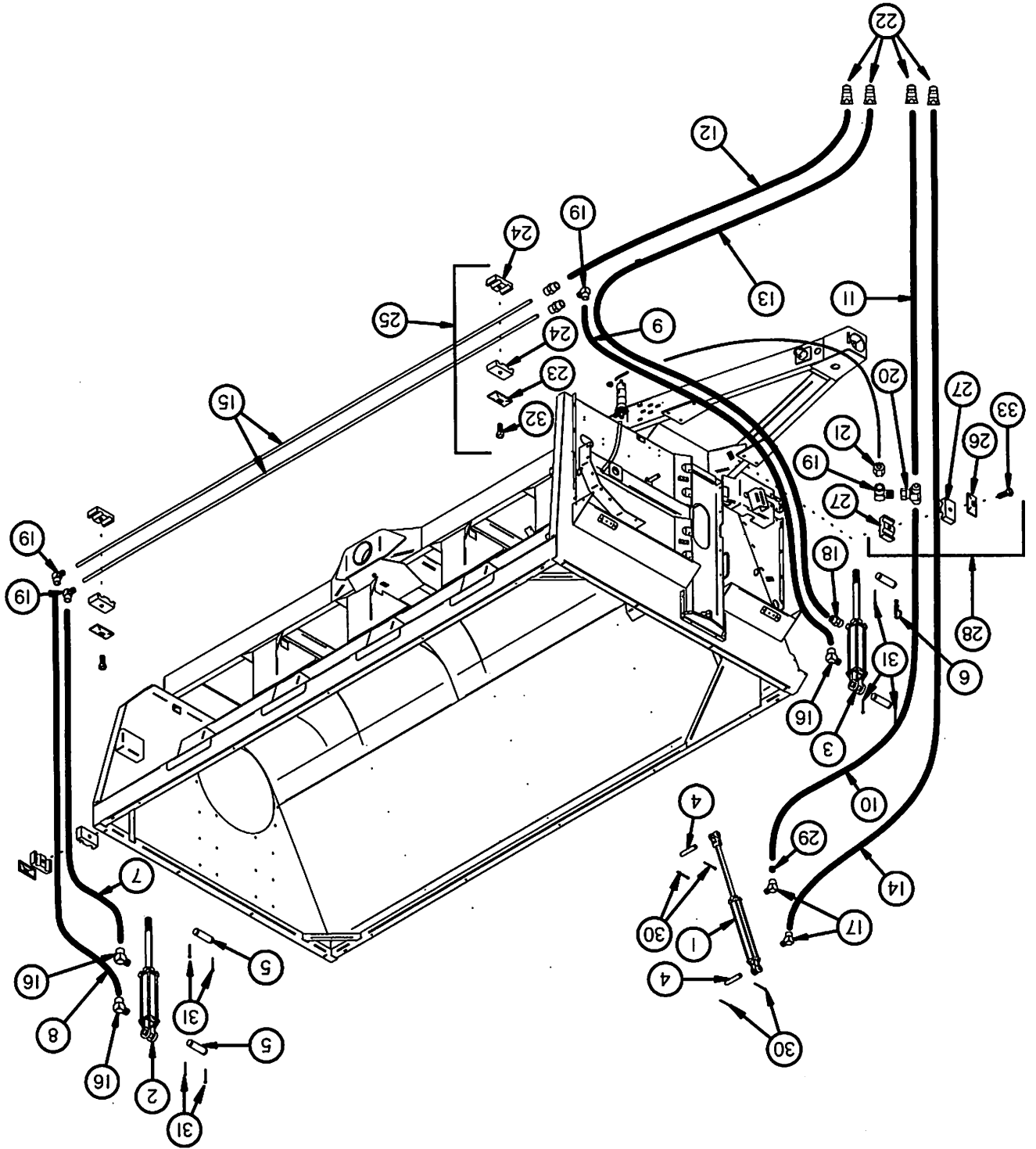


Figure 8
Hydraulics

**Figure 7
Splash Guards/Rails**

DESCRIPTION	PART#	QUANTITY	ITEM#
SPLASH GUARD	TS245	2	1
WOOD RAIL	TS100	2	2
BOLT, 3/8" X 1" GR. 5	YBHH12010	8	3
CARR. BOLT, 3/8" X 1" GR. 5	YBCR12010	4	4
CARR. BOLT, 3/8" X 3-1/4" GR. 5	YBCR12080	12	5
CARR. BOLT, 3/8" X 6-1/2" GR. 2	YBCR12125	10	6
WASHER, FLAT, 3/8" USS	YWFL12005	34	7
WASHER, FLAT, 1/2" USS	YWFL16005	10	8
WASHER, LOCK, 3/8"	YWLO12005	12	9
HEX NUT, 3/8"-16	YNHX12005	34	10

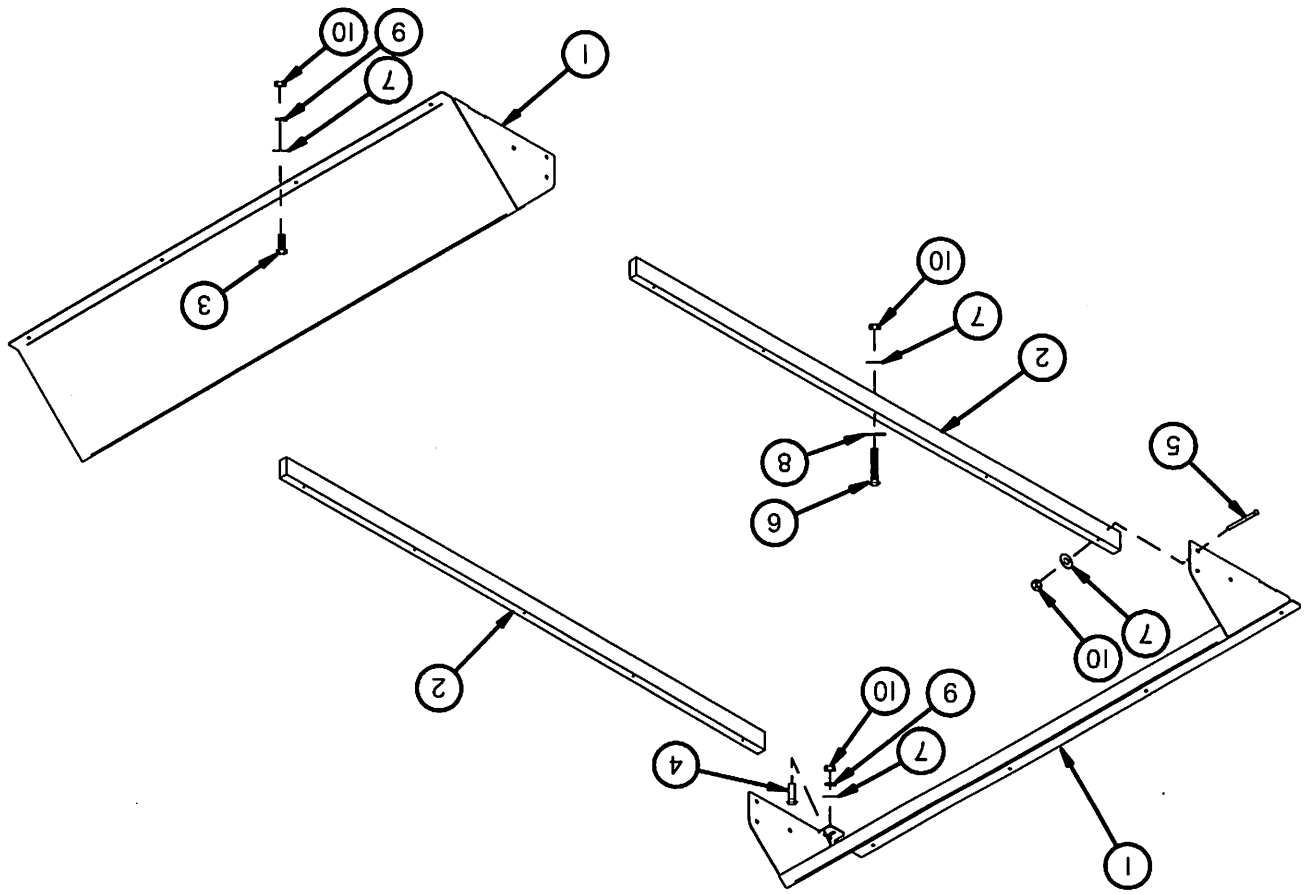


Figure 7
Splash Guards/Rails

Figure 6 Guards/Shields

DESCRIPTION	PART#	QUANTITY	ITEM#
FRONT SHIELD	TS234	1	1
FRONT CYLINDER COVER	TS235	1	2
FRONT SHIELD RIGHT SIDE	TS236	1	3
FRONT SHIELD LEFT SIDE	TS238	1	5
HOSE HOLDER	TS239	1	6
GEARBOX	TS240	1	7
JACKSHAFT BRACE	TS241	1	8
SHIELD HINGE	TS242	2	9
FRONT SHIELD MOUNT	TS243	2	10
MAUNAL HOLDER	S522	1	11
LATCH MOUNT	X194	2	12
RUBBER LATCH	X192	2	13
LATCH KEEPER	X193	2	14
LATCH PIN	X195	2	15
SHIELD HANDLE	TS96	2	16
CHAIN PTO HOLDER	TS130	1	17
GAS STRUT	TS244	2	18
SPACER	GM180	4	19
BOLT, 1/4" X 1/2" GR. 5	YBHH08015	11	20
BOLT, 1/4" X 3/4" GR. 5	YBHH08100	4	21
BOLT, 3/8" X 1" GR. 5	YBHH12010	5	22
BOLT, 5/8" X 1-1/2" GR. 5	YBHH20010	8	23
CARR. BOLT, 5/16" X 3/4" GR. 5	YBCR10030	8	24
CARR. BOLT, 3/8" X 1" GR. 5	YBCR12010	24	25
WASHER, FLAT, 1/4" USS	YWFL08005	4	26
WASHER, FLAT, 5/16" USS	YWFL10005	8	27
WASHER, FLAT, 3/8" USS	YWFL12005	29	28
WASHER, FLAT, 5/8" USS	YWFL20005	3	29
WASHER, LOCK, 1/4"	YWLO08005	8	30
WASHER, LOCK, 5/16"	YWLO10005	10	31
WASHER, LOCK, 3/8"	YWLO12005	25	32
WASHER, LOCK, 5/8"	YWLO20005	8	33
HEX NUT, 1/4"-20	YNHX08005	11	34
HEX NUT, 5/16"	YNHX10005	10	35
HEX NUT, 3/8"-16	YNHX12005	25	36
HEX NUT, 5/8"-11	YNHX20005	8	37
HEX NUT, TOP LOCK, 3/8"-16	YNTL12005	4	38
EXTRUDED U NUT, 1/4"-20	YNUN08005	4	39

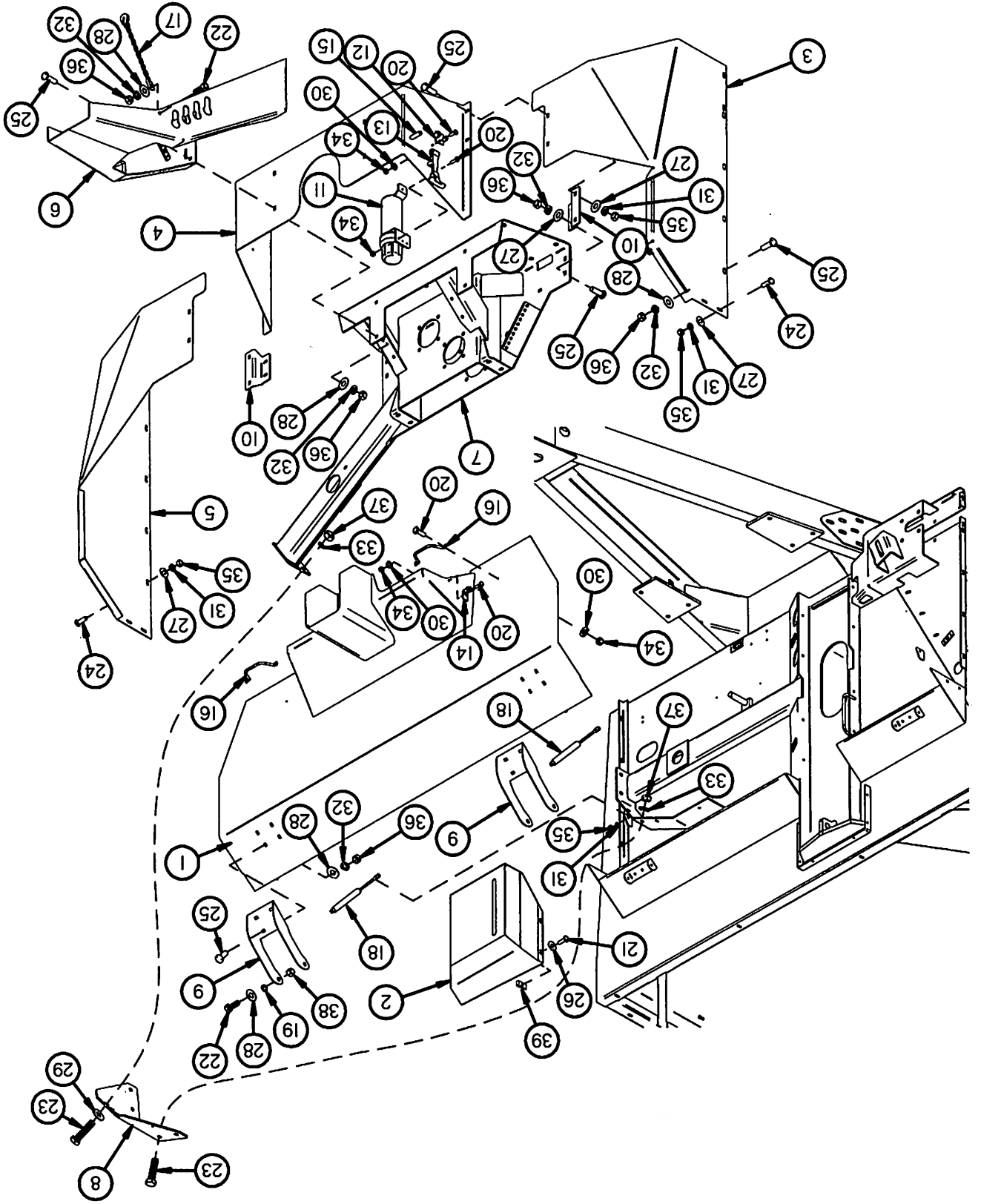


Figure 6
Guards/Shields

Figure 5 Expeller/Discharge Gate - Pan

<u>ITEM #</u>	<u>QUANTITY</u>	<u>PART #</u>	<u>DESCRIPTION</u>
1	1	TS67	EXPELLER
2	12	TS68	EXPELLER PADDLE
3	1	TS72	SWING AWAY PAN FRAME
4	1	TS73	SWING AWAY PAN
5	1	TS74	PAN LATCH HANDLE
6	1	TS75	EXPELLER BACK POLY
7	1	TS76	EXPELLER PAN POLY
8	1	56N146	SHIELD ANGLE
9	3	T73	SPACER
10	1	K103	SPRING
11	1	G89	1/4"-28 STRAIGHT GREASE ZERK
12	1	TS18	PAN RUBBER SEAL
13	1	YPCT06010	COTTER PIN, 3/16" X 1-1/4"
14	6	YBCR10010	CARR. BOLT, 5/16" X 1" GR. 5
15	24	YBCR16019	SHAKER SCREEN BOLT, 1/2" X 1-3/4" GR. 8
16	20	YSFS16010	FLAT HEAD SOCKET CAP SCREW, 1/2" X 1-1/2"
17	4	YSFS16020	FLAT HEAD SOCKET CAP SCREW, 1/2" X 1-3/4"
18	6	YWFL10005	WASHER, FLAT, 5/16" USS
19	24	YWFL16005	WASHER, FLAT, 1/2" USS
20	6	YWLO10005	WASHER, LOCK, 5/16"
21	6	YNHX10005	HEX NUT, 5/16"
22	24	YNRL16005	HEX NUT, REVERSIBLE-SIDE LOCK, 1/2"-13
23	24	YNL16006	HEX NUT, TOP LOCK, 1/2"-13 GR. 9

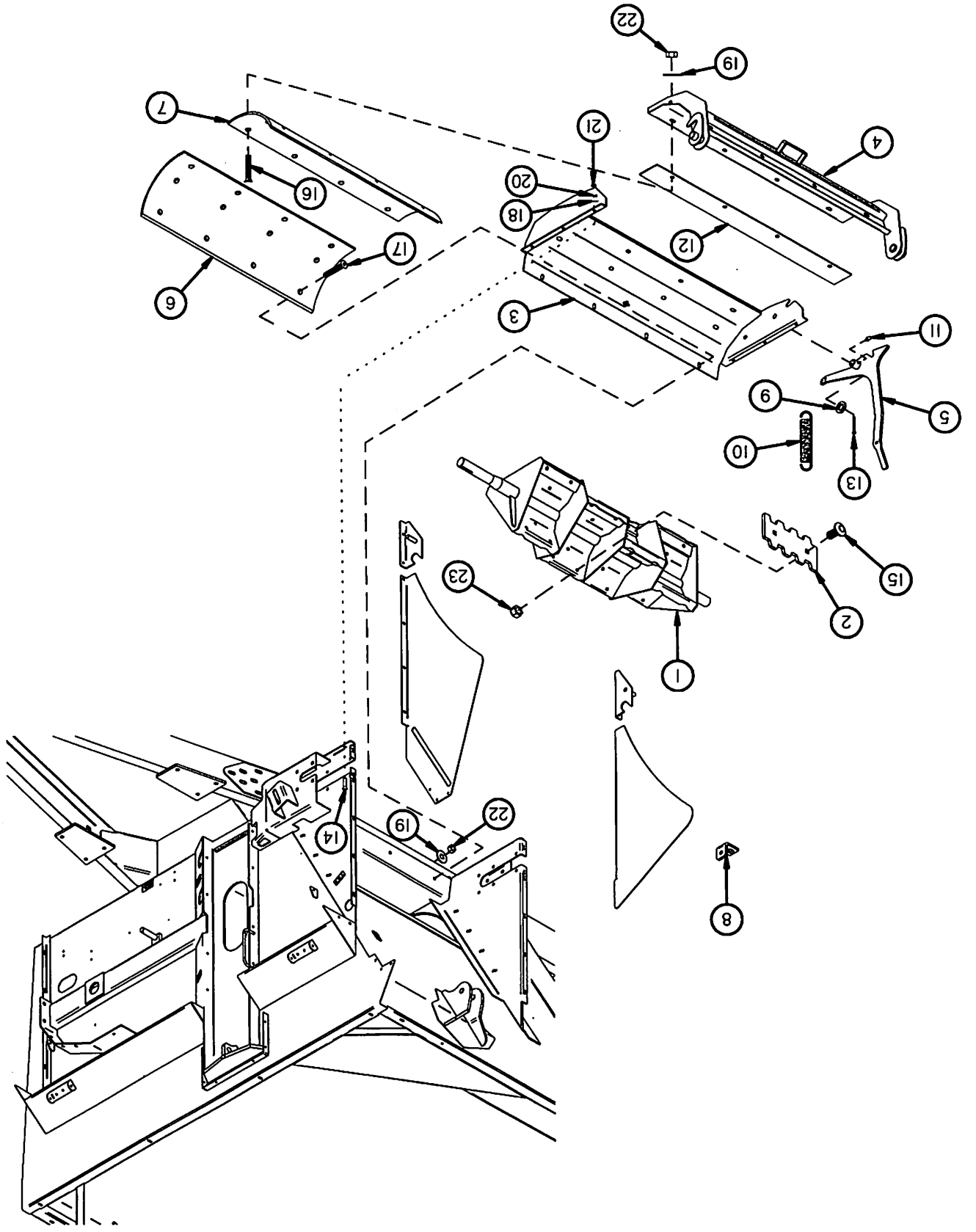


Figure 5
Expeller/Discharge Gate - Pan

Expeller/Discharge Gate - Door

Figure 4

ITEM#	QUANTITY	PART#	DESCRIPTION
1	1	TS232	EXPPELLER SPOUT LEFT HAND
2	1	TS49	PAN HINGE BRACKET LEFT
3	1	TS233	EXPPELLER SPOUT RIGHT HAND
4	1	TS51	PAN HINGE BRACKET RIGHT
5	2	TS52	DOOR SLIDER POLY
6	2	TS53	EXPPELLER DOOR GUIDE
7	1	TS54	EXPPELLER DOOR
8	1	TS55	DEFLECTOR ADJUSTMENT HANDLE
9	1	TS56	DEFLECTOR ADJUSTMENT LINK
10	1	TS57	ADJUSTABLE FLAT DEFLECTOR
11	1	TS58	DOOR INDICATOR
12	2	TS59	DEFLECTOR SIDE PIN
13	1	TS60	DEFLECTOR MID PIN
14	1	TS61	DEFLECTOR SEAL LEFT
15	1	TS62	DEFLECTOR SEAL MID
16	1	TS63	DEFLECTOR SEAL RIGHT
17	2	TS64	SEAL STRAP LONG
18	1	TS65	SEAL STRAP MID
19	2	TS66	SEAL STRAP SHORT
20	2	T143	CYLINDER PIN
21	4	T144	CLIP PIN
22	1	TS69	CASTER LOCKING PIN
23	3	X97	HAIR PIN
24	1	WM378	HAIR PIN W/LANYARD
25	2	TS307	HANDLE PIVOT
26	5	YBHH10105	BOLT, 5/16" X 3/4" GR. 5
27	4	YBHH12010	BOLT, 3/8" X 1" GR. 5
28	1	YBHH16105	BOLT, 1/2" X 3" GR. 5
29	16	YBCR10010	CARR. BOLT, 5/16" X 1" GR. 5
30	8	YBCR12010	CARR. BOLT, 3/8" X 1" GR. 5
31	7	YBCR12020	CARR. BOLT, 3/8" X 1-1/4" GR. 5
32	1	YBCR12015	CARR. BOLT, 3/8" X 1-1/2" GR. 5
33	10	YSFS12005	FLAT HEAD SOCKET CAP SCREW, 3/8" X 1-1/4"
34	19	YWFL10005	WASHER, FLAT, 5/16" USS
35	20	YWFL12005	WASHER, FLAT, 3/8" USS
36	2	YWFL16005	WASHER, FLAT, 1/2" USS
37	5	YWLO10005	WASHER, LOCK, 5/16"
38	30	YWLO12005	WASHER, LOCK, 3/8"
39	5	YNHX10005	HEX NUT, 5/16"
40	30	YNHX12005	HEX NUT, 3/8"-16
41	16	YNL10005	HEX NUT, TOP LOCK, 5/16"-18
42	1	YNL16005	HEX NUT, TOP LOCK, 1/2"-13

Figure 3

Expeller/Discharge Gate - Bearings

ITEM#	QUANTITY	PART#	DESCRIPTION
1	1	TS43	DOOR SEAL CLAMP
2	1	TS44	EXPPELLER DOOR TOP SEAL
3	1	TS45	EXPPELLER BEARING SHIELD
4	2	HGV41	EXPPELLER BEARING
5	2	TS47	COVER PLATE
6	1	G89	1/4"-28 STRAIGHT GREASE ZERK
7	12	YBCR12010	CARR. BOLT, 3/8" X 1" GR. 5
8	2	YBHH08100	BOLT, 1/4" X 3/4" GR. 5
9	8	YBHH18010	BOLT, 9/16" X 1-3/4" GR. 5
10	4	YWFL12005	WASHER, FLAT, 3/8" USS
11	2	YWLO08005	WASHER, LOCK, 1/4"
12	16	YWLO12005	WASHER, LOCK, 3/8"
13	8	YWLO18005	WASHER, LOCK, 9/16"
14	2	YNHX08005	HEX NUT, 1/4"-20
15	16	YNHX12005	HEX NUT, 3/8"-16
16	8	YNHX18005	HEX NUT, 9/16"-12

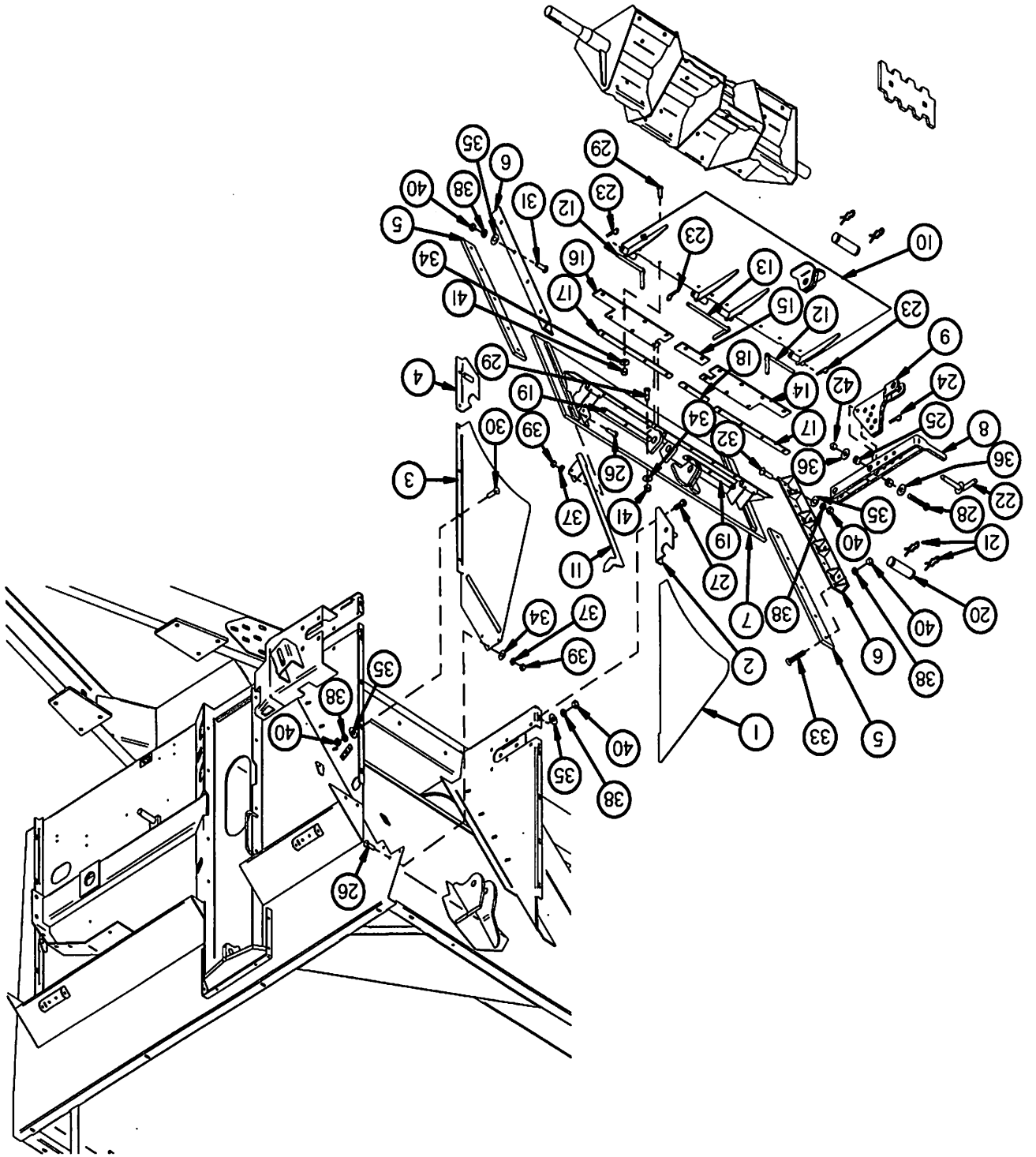


Figure 4
Expeller/Discharge Gate - Door

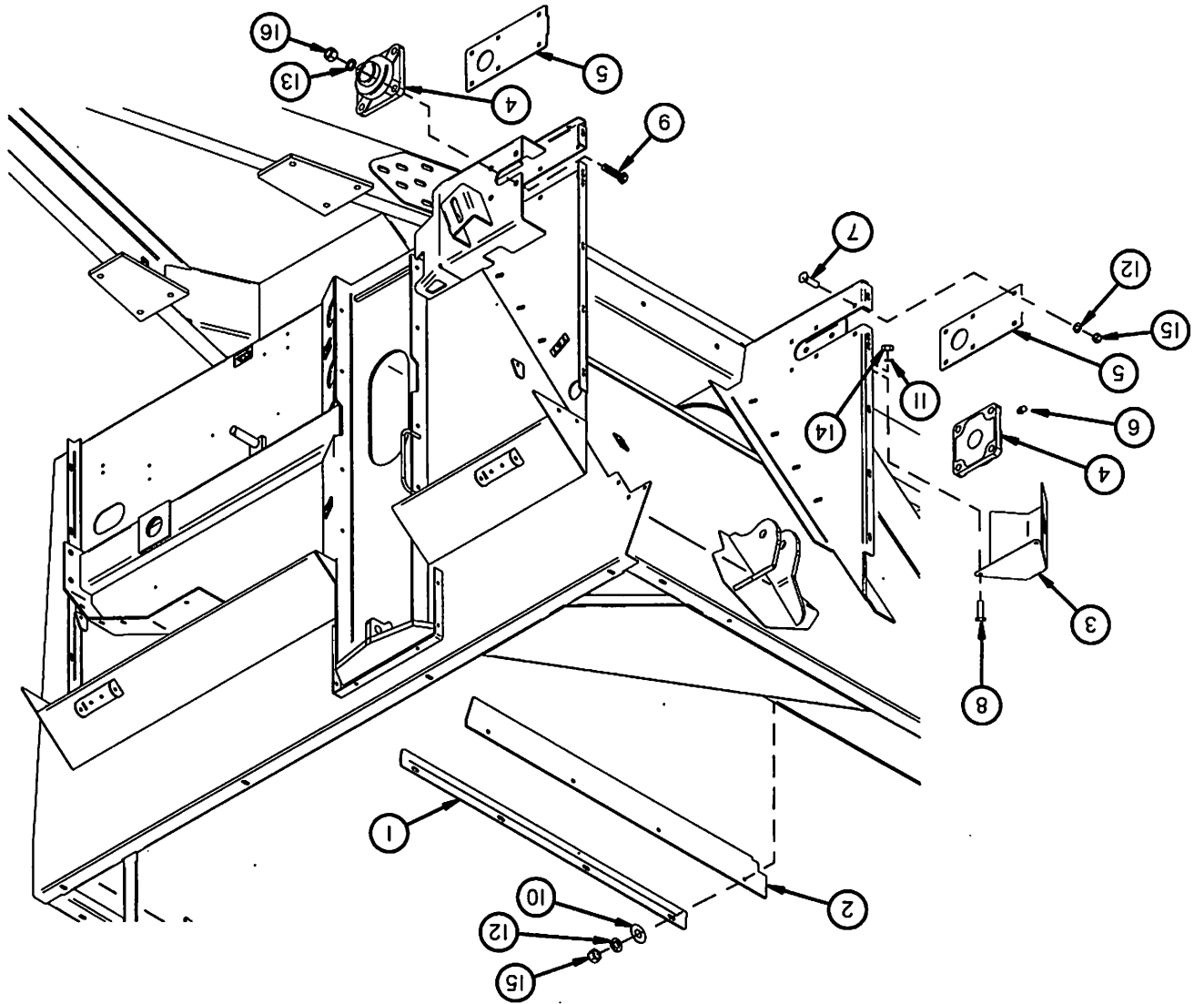


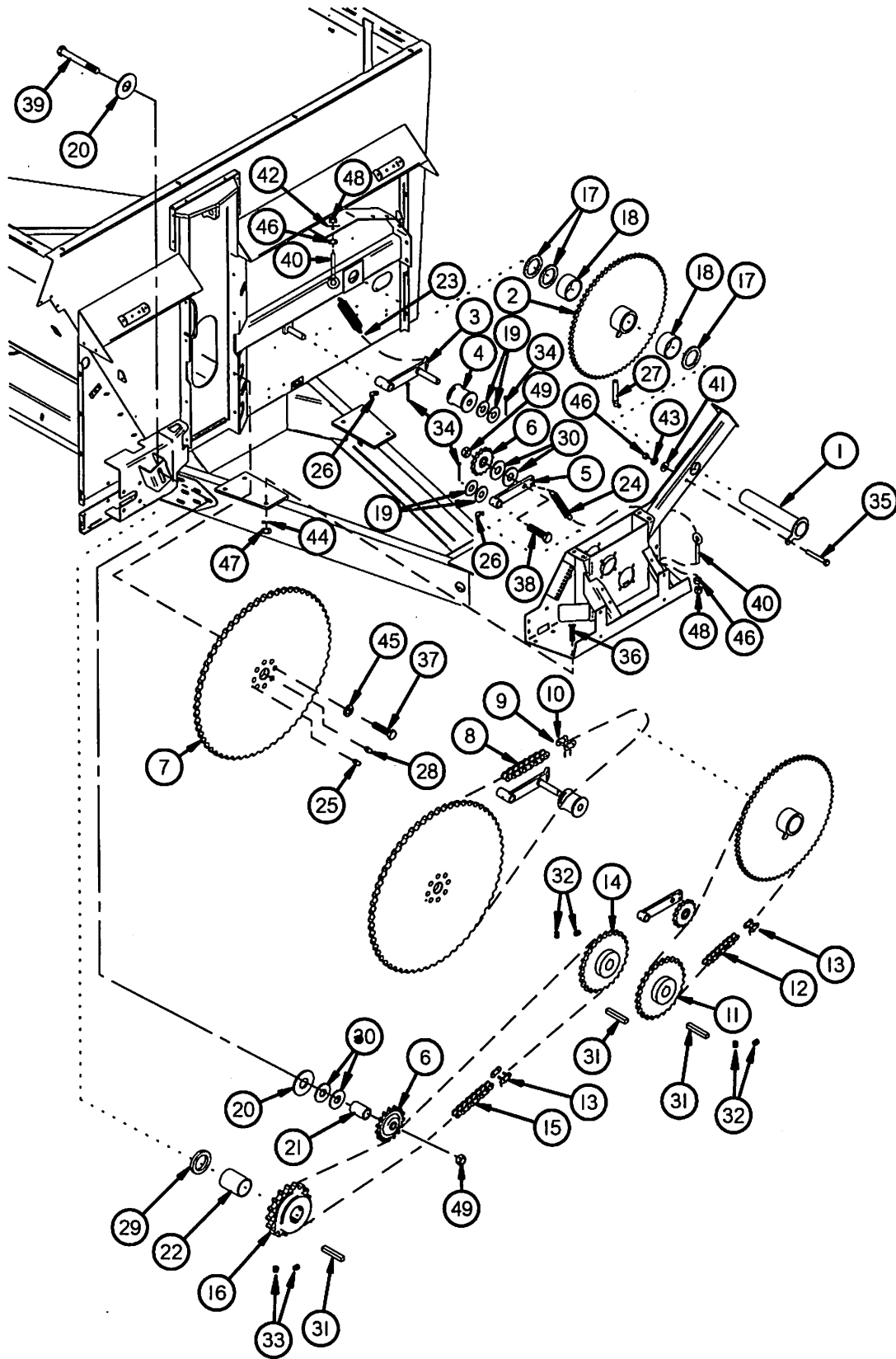
Figure 3
Expeller/Discharge Gate - Bearings

Figure 2 Auger & Expeller

DESCRIPTION	PART#	QUANTITY	ITEM#
COUNTER SHAFT	TS211	1	1
COUNTER SHAFT REDUCTION	TS212	1	2
AUGER CHAIN TENSIONER	TS213	1	3
ROLLER IDLER	TS25	1	4
CHAIN TENSIONER	TS214	1	5
SPROCKET/IDLER ASSY	16SV328	2	6
SPROCKET 140-B-54	TS217	1	7
CHAIN/ROLLER #140HE X 77	TS218	1	8
LINK/OFFSET (#140HE)	TS219	1	9
LINK/CONNECTOR (#140HE)	TS220	1	10
SPROCKET/DRIVE #80X14T (STANDARD)	TS221	1	11
SPROCKET/DRIVE #80X12T (OPTIONAL)	TS372	1	*
SPROCKET/DRIVE #80X15T (OPTIONAL)	TS373	1	*
SPROCKET/DRIVE #80X16T (OPTIONAL)	TS374	1	*
CHAIN/ROLLER #80HE X 98 (14T & 15T SPROCKETS)	TS222	1	12
CHAIN/ROLLER #80HE X 97 (12T SPROCKET)	TS375	1	*
CHAIN/ROLLER #80HE X 99 (16T SPROCKET)	TS376	1	*
LINK/CONNECTOR (#80HE)	TS223	2	13
SPROCKET #80X16T (STANDARD)	TS224	1	14
SPROCKET #80X12T (OPTIONAL)	TS377	1	*
SPROCKET #80X14T (OPTIONAL)	TS378	1	*
CHAIN/ROLLER #80HE X 84 (16T SPROCKET)	TS225	1	15
CHAIN/ROLLER #80HE X 82 (12T SPROCKET)	TS379	1	*
CHAIN/ROLLER #80HE X 83 (14T SPROCKET)	TS380	1	*
SPROCKET/80-B-17	TS226	1	16
SPACER 2-1/132" (THICK)	TS227	A/R	17
SPACER 2-1/132" (THIN)	TS228	A/R	*
BRONZE BUSHING	TS228	2	18
1" SPACER	S345	4	19
SPACER .780 ID	16SV376	2	20
BUSHING 3/4" X 7/8"	TS230	1	21
SPACER	TS231	1	22
SPRING	BFR138	1	23
SPRING/EXTENSION	10R14	1	24
GREASE ZERK	G89	1	25
GREASE ZERK 90 DEGREE	RG51	2	26
ZERK, 90 DEGREE, 1-13/16" X 1/8" PIPE THREAD	ZK90	1	27
1/8" NPT GREASE ZERK #1610 (LEFT SIDE AXLE)	BFR28	1	28
SHIM, 3/16"	S36	A/R	29
SHIM, 1/8"	S409	A/R	*
WASHER	T73	4	30
3/8" X 1-1/2" SQ. KEY	G139	3	31
SET SCREW, SOCKET, KNURLED CUP PT, 3/8"-16 X 3/8"	YSKP12025	4	32
SET SCREW, SOCKET, KNURLED CUP PT, 3/8"-16 X 1/2"	YSKP12010	2	33
COTTER PIN, 5/32" X 1-1/2"	YPC105010	3	34
BOLT, 3/8" X 2-3/4" GR. 5	YBHH12110	1	35
BOLT, 5/8" X 1-1/2" GR. 5	YBHH20010	6	36
BOLT, HEX HEAD, 3/4" X 2-3/4" GR. 8	YBHH24041	8	37
BOLT, 3/4" X 3" GR. 5	YBHH24050	1	38
BOLT, 3/4" X 3-1/2" GR. 5	YBHH24055	1	39
TURNED EYE BOLT, 3/8" X 3" FULL THREAD	YBTE12025	2	40
WASHER, FLAT, 5/16" USS	YWFL10005	1	41
WASHER, FLAT, 3/8" USS	YWFL12005	1	42
WASHER, LOCK, 3/8"	YWLO12005	1	43
WASHER, LOCK, 5/8"	YWLO20005	6	44
WASHER, LOCK, 3/4"	YWLO24005	8	45
HEX NUT, 3/8"-16	YNHX12005	3	46
HEX NUT, 5/8"-11	YNHX20005	6	47
HEX NUT, NYLON LOCKNUT, 3/8"	YNNY12005	2	48
HEX NUT, REVERSIBLE-SIDE LOCK, 3/4"-10	YNRL24005	2	49

NOTE: * MEANS NOT SHOWN
A/R: AS REQUIRED

Figure 2
Auger & Expeller Drive



NOTE: * MEANS NOT SHOWN
A/R: AS REQUIRED

ITEM#	QUANTITY	PART#	DESCRIPTION
1	1	TS200	AUGER
2	1	TS201	TUB SIDE POLY
3	1	TS4	POLY TOP HOLD DOWN
4	1	TS202	BACK PANEL
5	1	TS7	BACK SLIDER POLY
6	1	TS8	BACK SLIDER
7	1	TS9	REAR AUGER BUSHING
8	8	TS10	SLIDER GUIDE
9	6	TS308	SLIDER GUIDE THIN
10	1	TS203	FRONT POLY SLIDE
11	1	TS204	FRONT SLIDE PLATE
12	1	TS205	TRUNNION HOUSING
13	1	TS206	FRONT AUGER BEARING
14	1	TS207	AUGER INDICATOR TOP
15	1	TS208	AUGER INDICATOR BOTTOM
16	1	TS209	SCALE HITCH CLEVIS
17	1	TS210	HITCH BAR STRAIGHT
18	1	TS306	JACK, SIDE WIND, 7000LBS
19	1	TS19	AUGER BACK COLLAR
20	A/R	TS227	SPACER 2-17/32" (THICK)
*	A/R	TS28	SPACER 2-17/32" (THIN)
21	4	G89	1/4" GREASE ZERK
22	1	DWM133	1/8" 45° ZERK (RIGHT SIDE AXLE)
*	1	BFR28	1/8" NPT GREASE ZERK (LEFT SIDE AXLE)
23	1	RG51	GREASE ZERK 90 DEGREE
24	1	TS229	6" RUBBER RING
25	2	TS230	BUSHING 3/4" X 7/8"
26	1	TS320	WEAR PLATE 6 INCH
27	1	WM367	SAFETY CHAIN (OPTIONAL)
28	2	YBHH08100	BOLT, 1/4" X 3/4" GR. 5
29	2	YBHH10105	BOLT, 5/16" X 3/4" GR. 5
30	1	YBHH20101	BOLT, HEX HEAD, 5/8" X 6" GR. 8
31	2	YBHH24018	BOLT, HEX HEAD, 3/4"-10 X 2" GR. 8, YELLOW ZINC FINISH
32	2	YBHH32026	BOLT, HEX HEAD, 1" X 6" GR. 8
33	20	YBCR12010	CARR. BOLT, 3/8" X 1" GR. 5
34	8	YBCR12020	CARR. BOLT, 3/8" X 1-1/4" GR. 5
35	8	YBCR12015	CARR. BOLT, 3/8" X 1-1/2" GR. 5
36	1	YSHS12018	SOCKET HEAD CAP SCREW, 3/8" X 4"
37	12	YWFL10005	WASHER, FLAT, 5/16" USS
38	20	YWFL12005	WASHER, FLAT, 3/8" USS
39	2	YWLO08005	WASHER, LOCK, 1/4"
40	14	YWLO10005	WASHER, LOCK, 5/16"
41	36	YWLO12005	WASHER, LOCK, 3/8"
42	2	YWLO24005	WASHER, LOCK, 3/4"
43	2	YNHX08005	HEX NUT, 1/4"-20
44	14	YNHX10005	HEX NUT, 5/16"
45	36	YNHX12005	HEX NUT, 3/8"-16
46	1	YNL12005	HEX NUT, TOP LOCK, 3/8"-16
47	1	YNRL20005	HEX NUT, REVERSIBLE-SIDE LOCK, 5/8"-11
48	2	YNRL32005	HEX NUT, REVERSIBLE-SIDE LOCK, 1"-8

Figure 1
Auger/Liner/Sides Hitch

H&S 5134 "Top Shot" Specifications

5134

General Specs

Cubic Ft. Struck Level	451				
Gallon Capacity	3377				
Tank Length	16'				
Overall Length	23' 7"				
Tank Width – Top	97"				
Auger Diameter	30"				
Poly Lined Tank	Left Side				
Overrunning Clutch	Yes				
Shear Bolt Protection	Yes				
PTO	1-3/8" or 1-3/4" 1000 RPM				
Expeller Size	40"				
Front and Rear Splashguards	Yes				
Weight	10,940#				
		<u>Specs</u> <u>w/445x22.5</u> <u>Tires</u>	<u>Specs</u> <u>w/21L x 16.1</u> <u>Tires</u>	<u>Specs</u> <u>w/49x19x20</u> <u>Tires</u>	<u>Specs</u> <u>w/700/50x22.5</u> <u>Tires</u>
Side Loading Height		93"	95"	93"	94"
Height @ Rear Splash		101"	103"	101"	102"
Height @ Front Splash		101"	103"	101"	102"
Overall Width		112"	114"	117"	126"

SPECIFICATIONS ARE SUBJECT TO CHANGE WITHOUT NOTICE

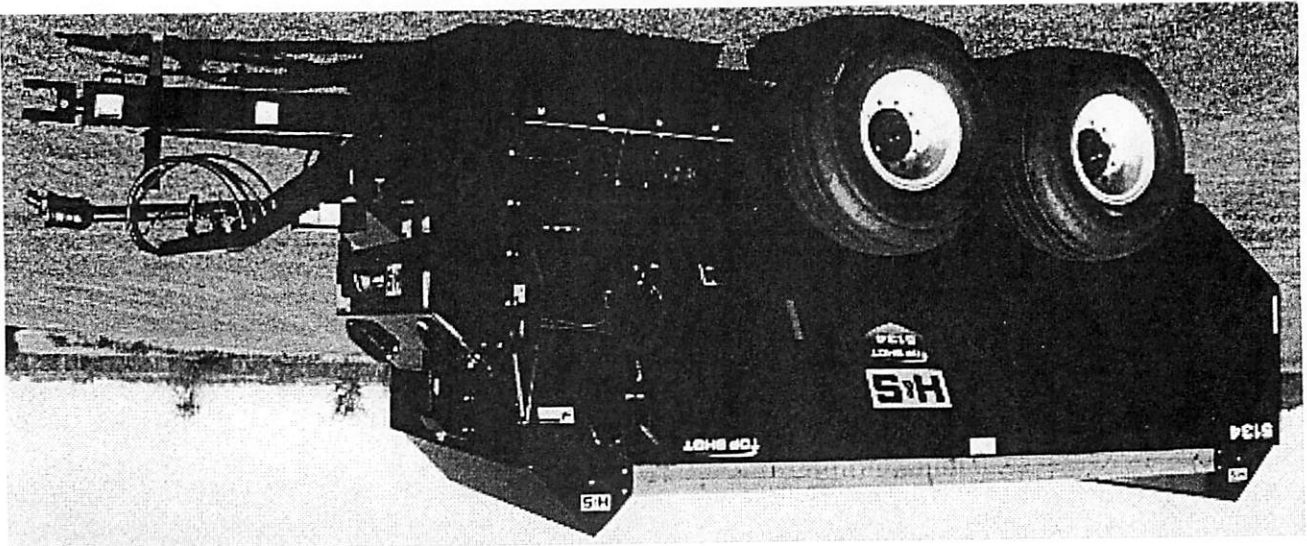
H&S MANUFACTURING CO., INC.
Manufactured By
P.O. BOX 768 (715) 387-3414 FAX (715) 384-5463
MARSHFIELD, WISCONSIN 54449

HSMFG1210

**OPERATOR'S MANUAL
AND
PARTS LIST**

5134 Starting Serial #013001

WARNING
READ AND UNDERSTAND THIS MANUAL
BEFORE OPERATING THIS EQUIPMENT
UNSAFE OPERATION OR MAINTENANCE OF THIS EQUIPMENT CAN RESULT IN
SERIOUS INJURY OR DEATH



**5134 Top Shot
Manure Spreaders**

